

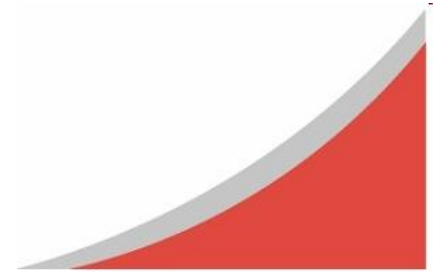
# Progression of the Accounting Engine from 11i to Rel 12

Rajesh Varma  
Doyen Systems Pvt. Ltd.

w w w . d o y e n s y s . c o m

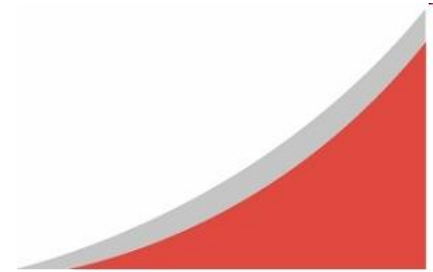
# TABLE OF CONTENTS

- ❑ Accounting Engine
- ❑ Progression of the Accounting Engine
- ❑ Rel 11i Transfer to GL Flow
- ❑ Global Accounting Engine Flow
- ❑ Sub Ledger Accounting.
- ❑ SLA Rel12 Flow
- ❑ Benefits of SLA
- ❑ Key Features SLA
- ❑ Summary



# ACCOUNTING ENGINE

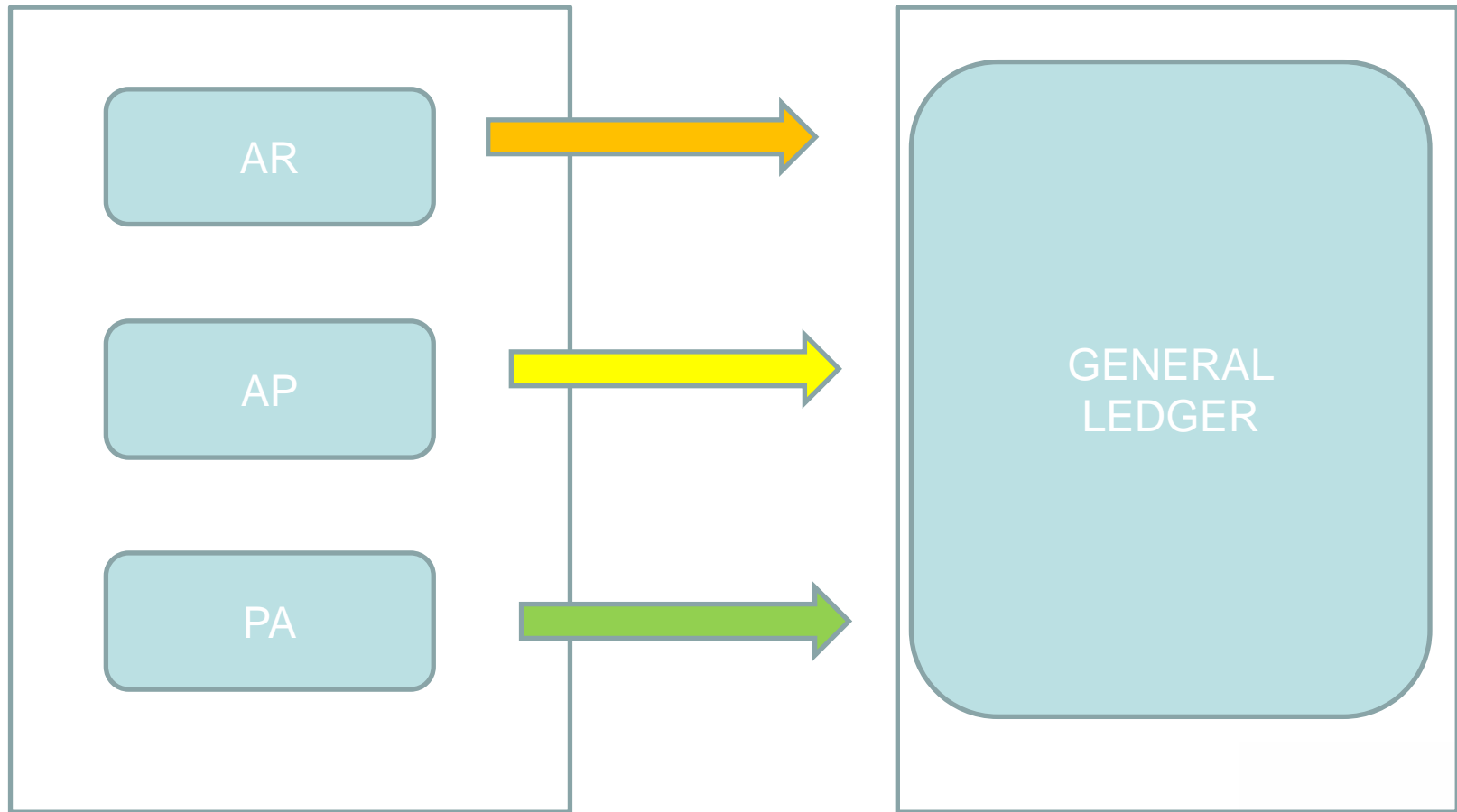
- A comprehensive frame work to address generation of accounting entries with all perceivable variations.
- centralized logic to read from the transaction data and generate the accounting entries based on the parameters defined.
- Enable mapping of business events having accounting impact to generate accounting entries as per the business rules keeping the legal requirements in view.
- Includes processing of the data and generation of Accounting Entries.
- To provide accounting data for preparation of Financial Reporting purposes.



# PROGRESSION OF THE ACCOUNTING ENGINE

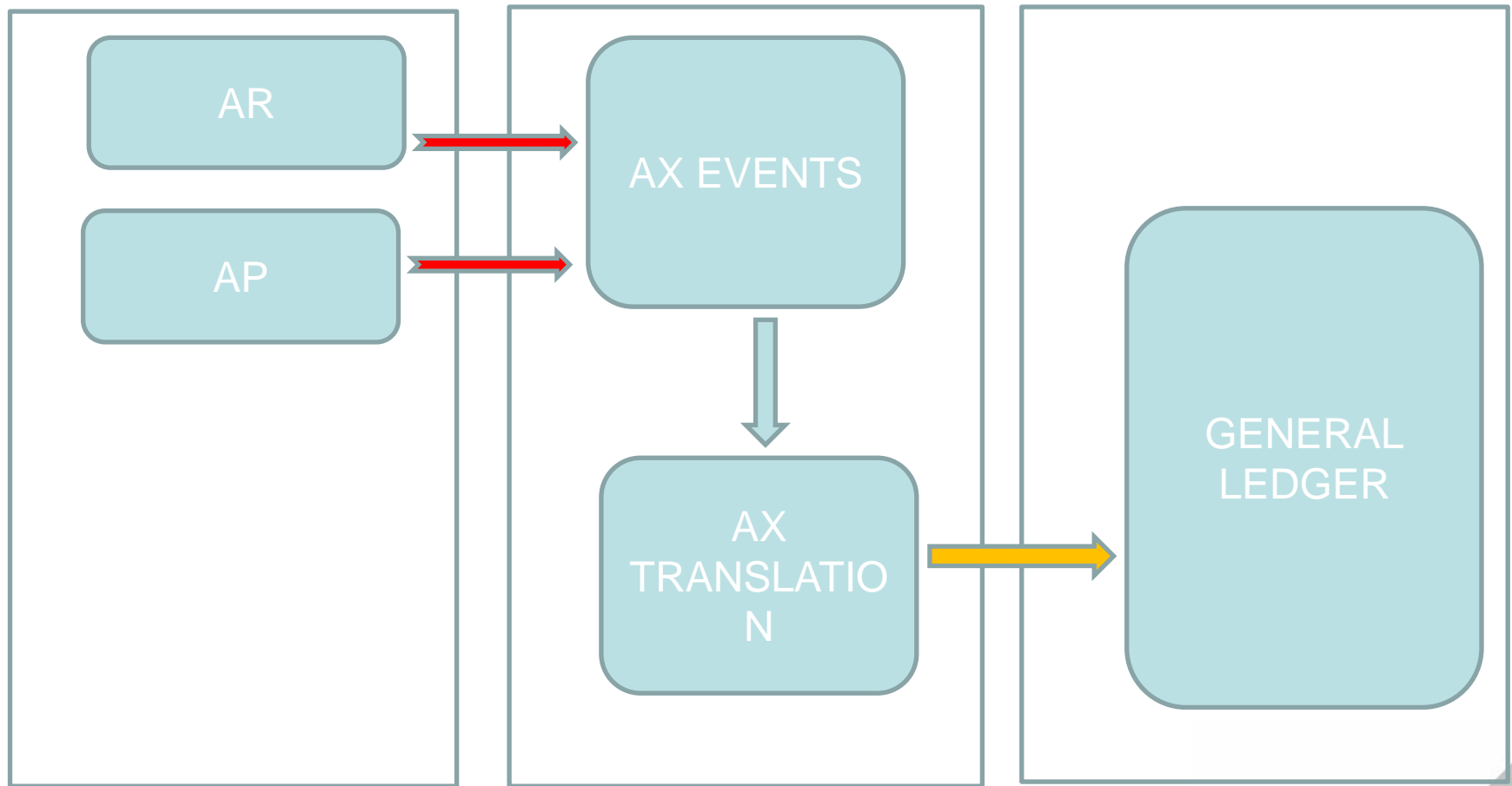
- In Rel 11i accounting workflow driven.
- Transfer to GL Program replaced by Global Accounting Engine.
- Global Accounting Engine a precursor to the Subledger Accounting in Rel12.
- Accounting Events captured and Translated before posting to GL
- Rel 12.SLA- Clear segregation of Accounting and Transaction

# REL 11i TRANSFER TO GL FLOW



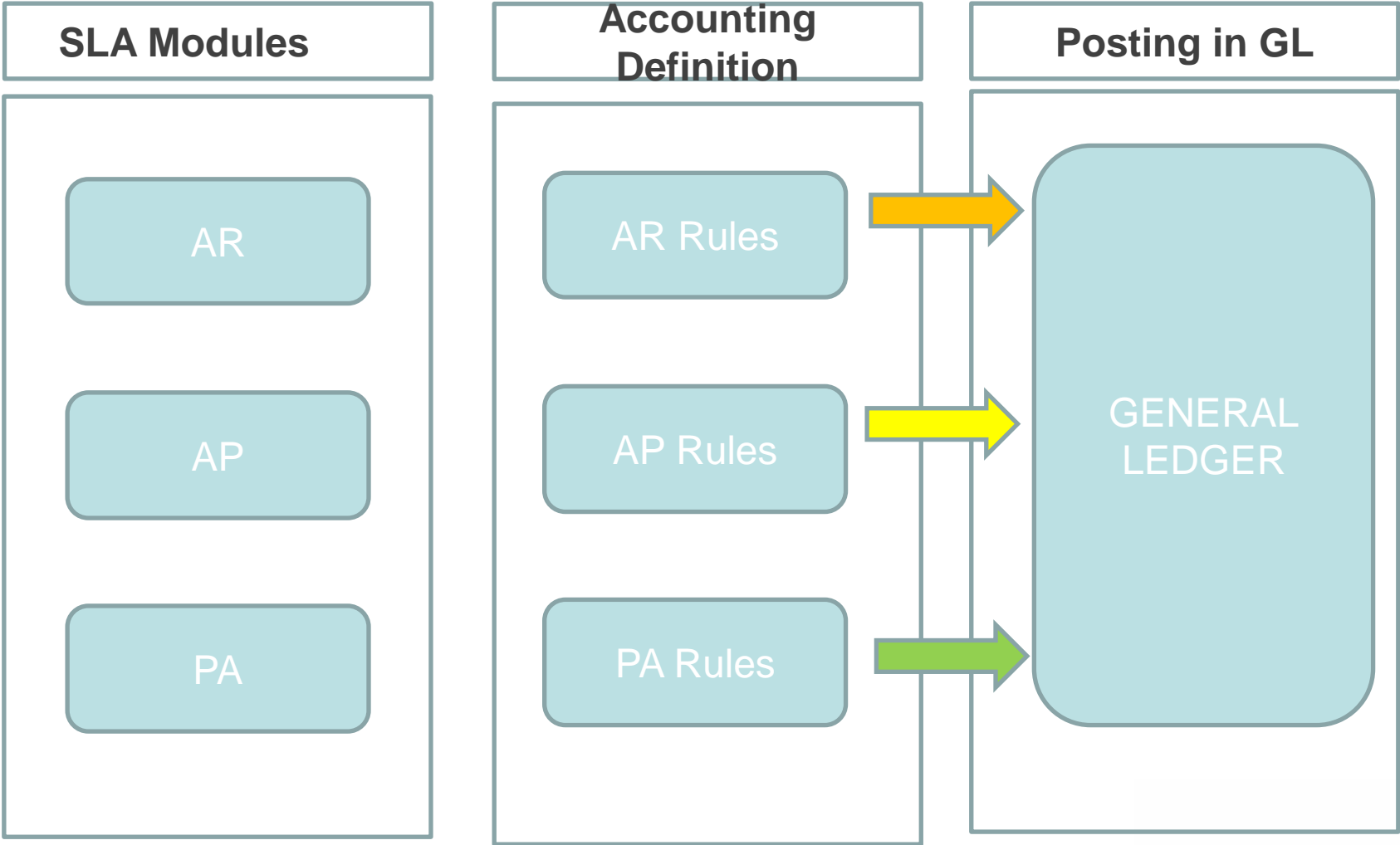
w w w . d o y e n s y s . c o m

# GLOBAL ACCOUNTING ENGINE FLOW



# SLA FLOW REL 12

w w w . d o y e n s y s . c o m



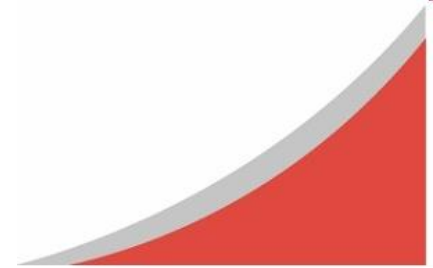
# SUB LEDGER ACCOUNTING

- In SLA the transaction and accounting of the transaction got decoupled giving the business greater flexibility in managing the accounting of a particular transaction.
- Multiple Representation possible
- 4<sup>th</sup> C (Accounting Convention) introduced.
- one more layer of abstraction was introduced which sits between the General Ledger and the Subledger
- SLA is an event driven rule based engine for generating accounting entries based on source transaction from all the subledger modules
- It is the centralized accounting repository for all the subledger transactions.



# BENEFIT FROM SLA

- A common data model and repository that allows for a single source of truth for subsystem accounting.
- A centralized data model for accurate and streamlined accounting, reconciliation, and reporting.
- A common posting engine for a simpler closing process.
- Full-drilldown to clear, auditable entries.
- Generate different accounting entries from the same business transaction into different Ledgers.
- Comply with legal and fiscal audit trail requirements



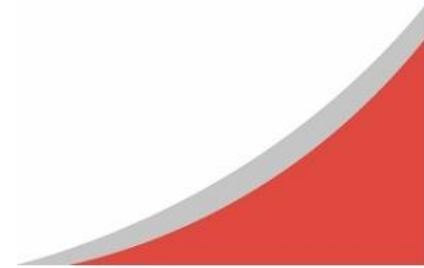
# KEY FEATURES

## KEY FEATURES OF SUB LEDGER ACCOUNTING

- Sub ledger accounting provides following services to Oracle applications
  - Generation and storage of detailed accounting entries
  - Flexible Journal Entry Set Ups
  - Storage of Subledger balances
  - Subledger accounting entries along with bi-directional drilldown to transactions
  - Subledger reporting
  - Multiple Accounting Representations
- Audit Trail Reports
- Validation rules including balance validation
- Maintain accounting rule as per the geographical location
- Traceability of account events – journal entries to transaction feed
- Manual entries, reconciliation & error handling

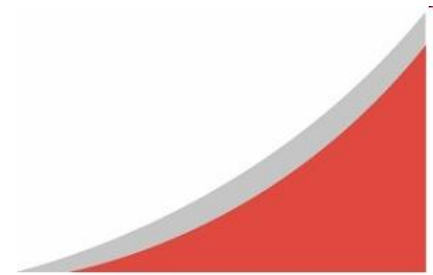
# SUMMARY

EBS Financial users have always looked for more flexibility in setting up the accounting engine for various financial transactions. This has now been made available in Rel12. From being a standalone accounting engine in 11i for each of the Oracle EBS modules, the Accounting Engine has undergone a sea change in Rel 12. It has now transformed into a flexible and easily configurable accounting engine that caters to the business driven accounting needs.



# Q&A

**rajesh.varma@doyensys.com**



**THANK  
YOU**

